

F

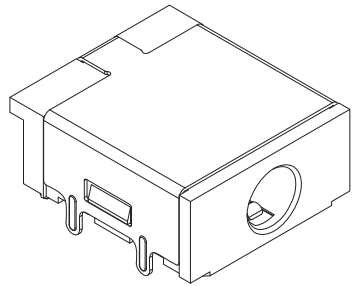
E

D

C

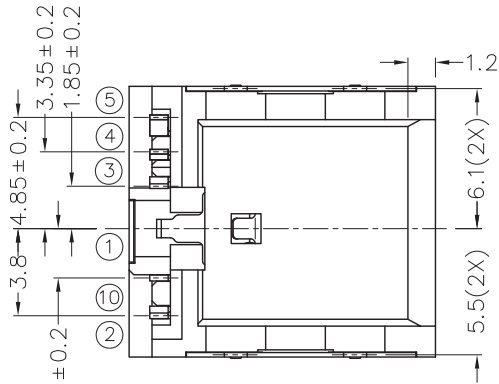
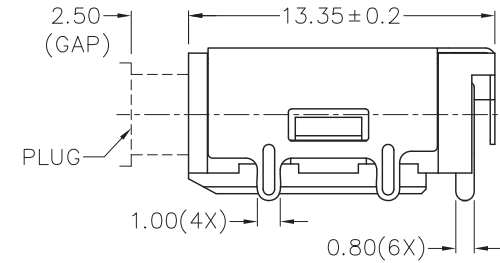
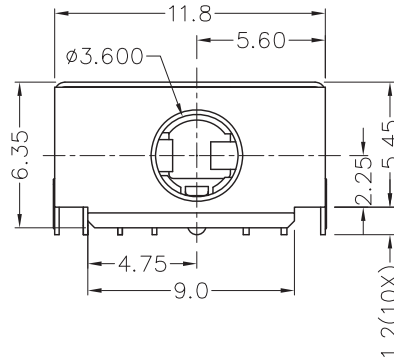
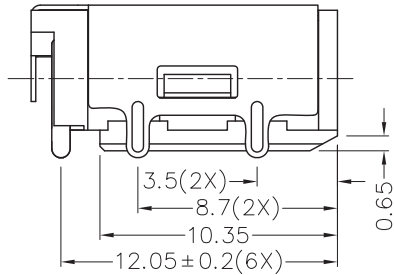
B

A



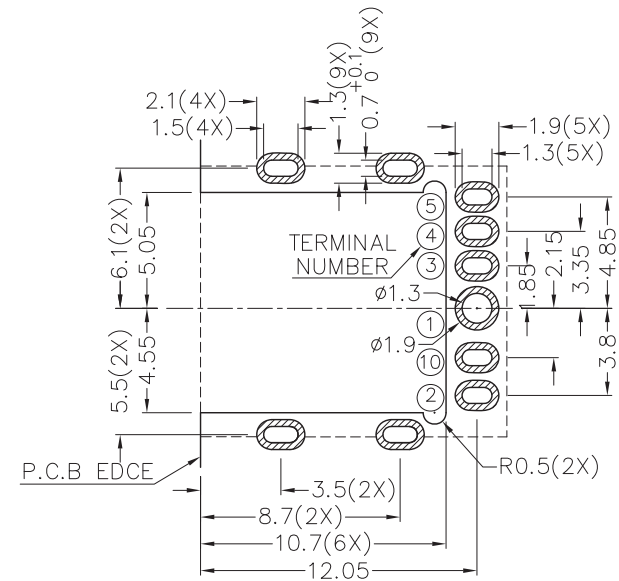
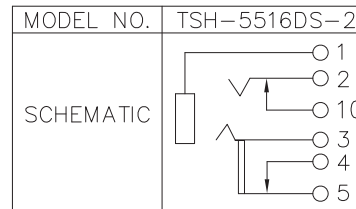
RoHS
Compliant

ZONE	SYMBOL	REVISION	APPROVAL	DATE

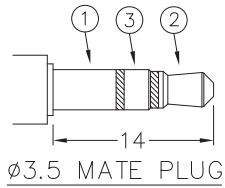


* MATERIAL

- TERMINAL 1 : COPPER ALLOY
- TERMINAL 2 : COPPER ALLOY
- TERMINAL 3 : COPPER ALLOY
- TERMINAL 4 : COPPER ALLOY
- TERMINAL 5 : COPPER ALLOY
- TERMINAL 10 : BRASS
- SHIELD : BRASS
- HOUSING : PA6T



RECOMMENDED PCB LAYOUT
TOLERANCE: ±0.05
(TOP VIEW)



CHAMPWAY 冠泰电子有限公司
CHAMPWAY ELECTRONICS CO., LTD.

PART NAME 3.5mm SMD STEREO JACK
PART NO. TSH-551DS-2

TOLERANCE UNLESS 0.0±0.2
OTHERWISE SPECIFIED: 0.00±0.1
0.00±0.05

UNIT: mm

DESIGN	CH.XIONG	DATE	20-7-2012	3:SCALE	3:1
DRAWING	CH.XIONG	DATE	3-10-2012	MATERIAL	*
CHECK		DATE		DWG. NO.	TZ\SH551DS-2-PA6T/A
APPROVAL		DATE		SHEET	

F

E

D

C

B

A